



**HESS**  
AUCTION GROUP

# Public Auction

REAL ESTATE  
PERSONAL PROPERTY

## 70 ACRE CLAY TWP. FARM & 2 LARGE WOODED LOTS



Auction for: Kenneth L. Seibert Estate  
Attorney: JD Young

\*For information about financing call 717-664-5238\*

**Real Estate Terms & Conditions:** 10% down day of sale. Balance due at settlement on or before 60 days. Announcements made on day of sale take precedence over advertised information.

**Saturday, April 23, 2022**

**Farm Equipment & Antiques 9AM**

**2PM Real Estate**

**875 W. FAIRVIEW RD.**

**LITITZ, PA 17543**

**Beautiful Lititz area farm made up of three parcels!  
Each parcel will be sold separately.**

**Parcel 1. (070-56197-0-0000)** This perfectly secluded 70.76 acre farm consists of level highly productive acreage located between Lititz and Ephrata surrounded by similar, picturesque farms. Buildings and improvements have been unchanged for several generations and include a large two-story brick farmhouse with all its original architectural charms, 3 bedrooms and two kitchen areas, large bank barn currently used to house cattle, large tobacco shed, detached 2-car garage and several agriculturally related outbuildings.

**This parcel is preserved.**

**Parcel 2. (070-04252-0-0000)** This 14 acre vacant lot is mostly wooded with some pasture ground and offers road frontage along Clay & Fairview Rd. **This parcel is preserved.**

**Parcel 3. (600-06385-0-0000)** This 14 acre vacant lot is made up of wooded area and pasture ground and includes a stream. Road frontage available along Clay Rd. **This parcel is preserved.**

**Parcels 2 & 3 will be sold together.**

**PARCELS 2 & 3 WILL BE AUCTIONED OFF AT 875 W. FAIRVIEW RD.**

**SHOWN BY APPOINTMENT**

**AUCTIONEER'S NOTE: FAMILY IS SETTLING AN ESTATE**





**Parcel 1: 70.76 Acre Farm w/ Home & Outbuildings**

**Type:** Two-Story Farmhouse

**Construction:** Masonry

**Exterior:** Brick

**Square Footage:** 2,576sq. ft.

**Lot Size:** 70.76 acres total

**Year Built:** 1811

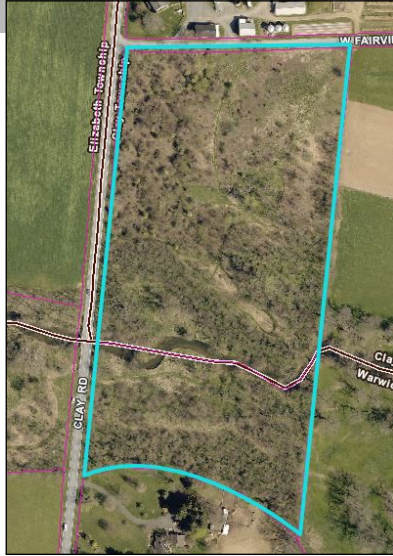
**Water/Sewer:** Private

**Zoning:** Agricultural

**Taxes:** Fall: \$5,004.12, Spring: \$1,152.47

**School District:** Ephrata Area SD

**Township:** Clay Township



**P2:** 14 Acres, Woodland & Pasture.  
Clay Twp. / Ephrata Area SD  
**Taxes:** TBA



**P3:** 14 Acres, Woodland & Pasture with stream.  
Warwick & Elizabeth Twp. / Warwick SD  
**Taxes:** Approx. \$54.64

**Join us for this exciting day selling with two auctioneers, contents of a multi-generational farm lots of surprises**

**Tractors:** JD 2640 Diesel; JD Cyclone B (as found); Allis Chalmers G (as found); 1500 Chevy Pick Up Truck

**Equipment:** JD 336 Baler w/ Kicker; 2 Farm-Built approx. 24ft. Metal Rack Wagons; New Holland 40 Ft. Elevator; JD 3 Pt. Sickle Bar Mower; Speed King approx. 30 Ft. Grain Auger; 2 - JD 4 Row Corn Planter; JD Roller Style Rake; 8 Ft. JD Transport Disc; 8 Ft. Brillion Cultipacker; JD 22 Crimper; Brillion 12 Ft. Cultmulcher; JD Flail Chopper; New Idea Manure Spreader; 3 - Bin Wagons; Zimmerman Hay Spear; Several Flat Wagons; PTO Fidelity 25KW Generator, JD 3 pt. post hole digger, 6 Ft. 3pt. Kodiak Brush Mower; JD 2 Bottom Rollover Plow; JD Grain Drill; New Idea Wheel Rake; 2 - Hesston PT10 Hay Bine; New Idea 1 Row Corn Picker; Several S Tine and Straight Tooth 3 Pt. Harrows; JD 880 3 Pt. Scraper Blade; Huskee 28 Ton Log Splitter, JD 314 Lawn Tractor, JD 170 Lawn Tractor, 2 Early Enterprise Mills, 2 Stihl Chainsaws, Straight Shaft Stihl FS91R String Trimmer

**Misc Farm Related:** 110 JD Garden Tractor (as found) Rear Tine Rototiller; Early Galvanized Chicken Nest Boxes; Chicken Crate; Peep Waterers; Early Bag Wagon; Traps; Wooden Wheels and Pulleys; Early Boxes; Large Selection of Farm Related Primitive Tools; Early Red Painted Carpenters Box; Butcher Equipment; Large Selection of Milk Cans; Several Pump Troughs including Brunnerville; 2-300 Gallon Fuel Tanks; Corn Sheller; Bentz Cast Iron Butcher Stove; Early McDona Lettered Scales Box; Torch Set; Wright Anvil and Stand NICE, Scalding Trough; Large Selection of Tools including Metal Working Equipment; Lincoln Welder; Large Lathe; Bench Grinder; Air Compressor; Wooden barrels,

**Furniture:** early unusual three drawer jelly cupboard, Oak oh front china closet, exceptional grained blanket chest with unusual paint, three-piece Victorian marble top bedroom suit, grain painted blanket chest, Early Butcher Block; unusual dovetailed chest over two drawers, three piece waterfall bedroom suits, Oak slant top carved desk, early oak bent wood collapsible chair, ornate end tables and plant stands, paint decorated plank bottom chairs, paint decorated plank bottom rocking chair, unusual slant top three drawer Butler's desk, **and many more items**

**Antique and Collectibles:** 2 - Sandstone Water Troughs including one very nice 7ft. Trough; exceptional collection of early quilts One signed grandma Landis 1897 Early Wooden Child's Wagon; Nice selection of early porcelain to include small amount of Gaudy Dutch blue transfer European bowls and other soft paste, jadeite pitcher, decorative glassware, art pottery, early baseball uniform, blue swirl agate and other enamelware, early toys including Massey Harris tractors, early jointed stuffed teddy bear, Hubley airplane, early fire engine, etc. selection of Pyrex, yellow ware bowls and other early kitchen wares, gingerbread mantle clock, cranberry scoop, costume jewelry, selection of cast-iron frying pans including Griswold and others, Early advertising tins, Lanterns; Cast Iron Butcher Kettles; Large Selection of Crocks and Jugs; including damaged blue decorated, early lighting fixtures, Early baskets, bone saws, Hubley cast-iron Banks doorstops bookends etc., early painted game table, large copper apple butter kettle, sausage stuffers, Cast iron frogs, good early textiles including, rugs, and more, silver plate, carnival glass, flow blue, cobalt blue glass, early stereo system, Texaco service station toy set, pictures and prints, **And many more items of interest Lots of scrap iron!**

**LENDERS**

**Chris Karshin**  
Fulton Bank  
717-682-0693

CKarshin@fultonmortgag  
ecompany.com

**Dwight Rohrer**  
Bank of Bird-In-Hand  
717-572-1492

drohrer@bihbank.com

**Megan Livengood**  
Bank of Bird-In-Hand  
717-929-2208

mliven-  
good@bihbank.com

**Marvin Charles**  
MidAtlantic Farm Credit  
717-368-7387

mcharles@mafc.com

**Dale Hershey**  
Univest  
717-519-7077

hersheyd@univest.net

**Jason R. Landis**  
First Citizens Community  
Bank

717-575-7435  
jrlandis@myfccb.com

This fact sheet is provided as a courtesy. Information included is believed to be accurate & has been provided to us by the consignor. John M. Hess Auction Service is not responsible for any clerical errors or misrepresentations by consignor in above printed materials. The purchaser is responsible to research and verify any and all information regarding this property.