



HESS
AUCTION GROUP

PUBLIC AUCTION

COMPLETE LIQUIDATION OF FLORIN FARMS HATCHERY INC.



Tuesday, March 18, 2025 • Commercial Assets & Real Estate

Ring 1: 9am Webcast (Live & Online) • Ring 2: 9:15am Live Auction • Ring 3: Online Only
11am Real Estate

625 KRAYBILL CHURCH RD. MOUNT JOY, PA 17552

Highlights Only, Too Numerous to Mention!

Tractors, Truck, Van:

2013 Freightliner Reefer Truck • 2001 Chevy express 3500, 15 passengers approx. 60,000 miles. • John Deere E 5100 w/ H260 loader, 4WD, 18.4-30 Tires, 3-pt & 4 hydraulic remotes, full cab, 12-speed transmission, approx. 268.8 hours • Allis Chalmers G Tractor

Equipment:

GT X 18 Clark electric forklift 868 hrs., 3307 lb. capacity, Scraper systems trailer snow removal system, Convertamatic self-propelled floor cleaner, John Deere quick attach pallet forks, electric pallet jack, & charger, Shuttle 9600 Snow blower, 8ft. wide, dual stage, Pressure controlled disinfectant system, Champion horizontal commercial air compressor, 80 gal., multiple dock pates, (3) WP x 45 Clark electric pallet jacks, Quest commercial dehumidifier, Tipping dumpster on skids, Honda 3000 Inverter generator

Tools & Miscellaneous:

DeWalt portable band saw, Bosch rotary hammer drill and accessories, DeWalt shop vac, retractable air hose reels, heavy-duty 220n extension cords, LED shop lights, large selection of heavy duty extension cords, DeWalt 20v backpack sprayer, heavy duty battery chargers and jump packs, pneumatic tools, line painter, several pancake portable air compressors, industrial bold cutters, socket sets & wrenches, drill bits, large selection of DeWalt battery tools, industrial portable space heaters, oxy acetylene torch kit, metro shelving, several straight shaft Stihl trimmers, Stihl backpack leaf blower, several industrial electric pressure washers, 14 sections of teardrop pallet racking, carts, trash cans, large selection of commercial skid totes, load locks, commercial cabinetry, 10+ dock plates of various sizes and shapes, 4x8 sheets of particle board, misc. dimensional lumber, lifetime tables of various sizes, stackable chairs, like-new Lincoln arc welder, commercial paint pot and painting system, heavy duty Olympia vise/pipe vise combination, large selection of new electrical wire, various gauges, bolt bins and organizers, spill kits, large selection of various size step ladders, ratchet straps, (2) hydraulic lift tables, lawn cart, paint cabinets, part bins, rolling ladders, advertising, stackable toolboxes, lockers, barrel cart, pallet jacks, bag scale, scroll saw, woodworking equipment, table saw, planer & more!

Office Furniture & Supplies:

Office desks, lunch tables, lockers, commercial upright display fridge, Kenmore freezer/refrigerator, True stainless-steel fridge, Frigidaire refrigerator/freezer, conference table, commercial coffee maker, folding tables, large selection of new cleaning supplies, air conditioners, fans, microwaves, office chairs, monitors, etc.

Online Buyers Only: 15% Buyers Premium up to \$10,000 • 10% Buyers Premium \$100,001 and up

Auction for: Florin Farms Hatchery Inc.

Attorney: Justin Bollinger

LEAD AUCTIONEER: John M. Hess

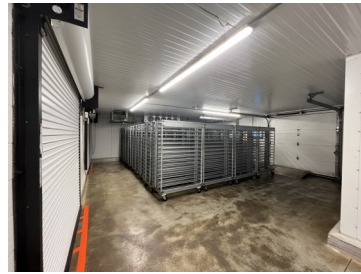
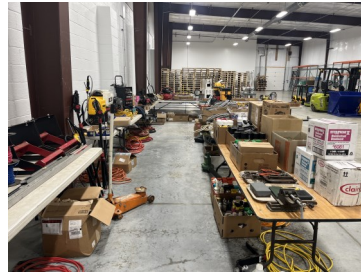
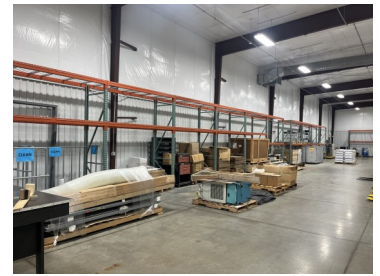
📞 717-664-5238 or 877-599-8894

🌐 www.hessauctiongroup.com

✉ contact@hessauctiongroup.com

JOHN M. HESS AUCTION SERVICE, INC.

AY000253L



For information about financing call 717-664-5238

Real Estate Terms & Conditions: \$150,000 down day of sale. Balance due at settlement on or before 60 days. Announcements made on day of sale take precedence over advertised information.

LENDERS

Chris Karshin
Fulton Bank
717-682-0693
CKarshin@fultonmortgagecompany.com

Dwight Rohrer
Bank of Bird-In-Hand
717-572-1492
drohrer@bihbank.com

Megan Livengood
Bank of Bird-In-Hand
717-929-2208
mliven-good@bihbank.com

Marvin Charles
Farm Credit
717-368-7387
mcharles@horizonfc.com

Dale Hershey
Univest
717-519-7077
hersheyd@univest.net

Jason R. Landis
First Citizens Community Bank
717-575-7435
jrlandis@myfccb.com

Josh Housekeeper
Ephrata National Bank
717-738-5473
agdept@epnb.com

This fact sheet is provided as a courtesy. Information included is believed to be accurate & has been provided to us by the consignor. John M. Hess Auction Service is not responsible for any clerical errors or misrepresentations by consignor in above printed materials. The purchaser is responsible to research and verify any and all information regarding this property.